

EAPC 2023

European Association for Palliative Care
18th World Congress

EQUITY & DIVERSITY



15 - 17 June 2023
Rotterdam
The Netherlands



Scott Murray
Tania Pastrana
Sébastien Moine

Towards Primary Care Providing Universal Access to Palliative Care in Europe

#EAPC2023



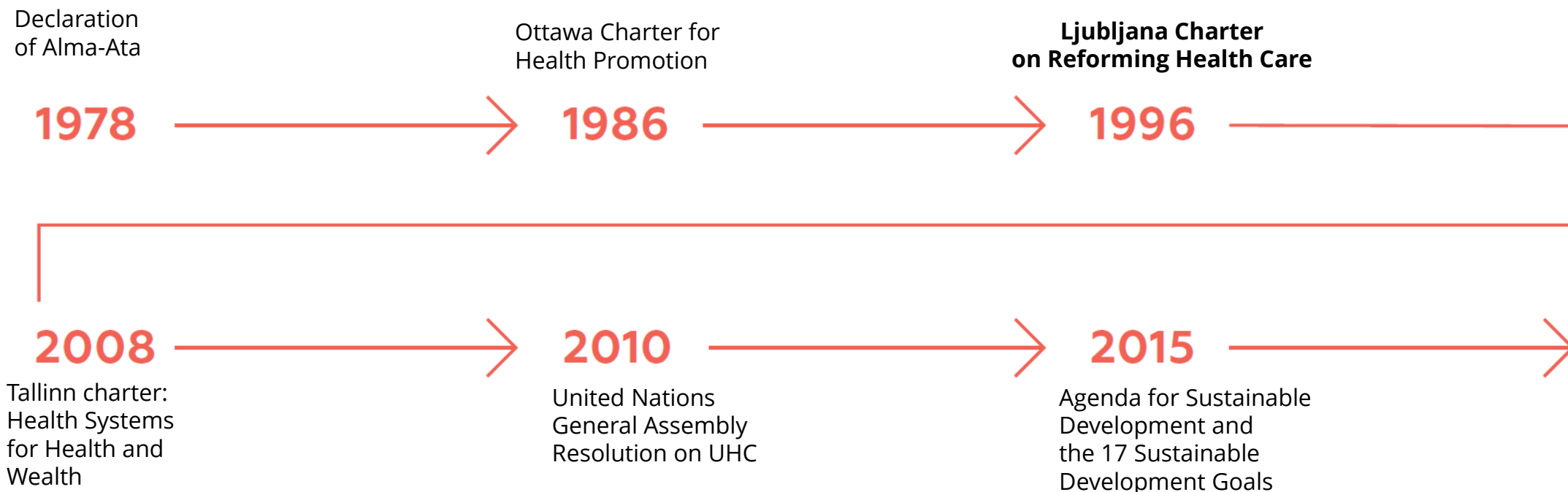
Equity & Diversity

“Primary palliative care is palliative care practised by primary health care workers, who are the principal providers of integrated health care for people in local communities throughout their life. It includes early identification and triggering of palliative care as part of integrated and holistic chronic disease management, collaborating with specialist palliative care services where they exist, and strengthening underlying professional capabilities in primary care.”

(Munday et al, 2019)

Historical evolution of primary (palliative) care

“Reforms, with primary health care as a philosophy, should ensure that health services at all levels protect and promote health, improve the quality of life, prevent and treat diseases, rehabilitate patients and **care for the suffering and terminally ill**.”



Historical evolution of primary (palliative) care

**European Framework
for Action on
Integrated Health
Services Delivery**

2016

**Declaration of Astana
at the Global Conference
on Primary Health Care**

2018

**United Nations High-level Meeting on UHC:
Moving Together to Build a Healthier World**

World Health Assembly Resolution on
Primary Health Care WHA 72.2

2019

2020

European Programme of Work (2020–2025):
United Action for Better Health in Europe

**World Health Assembly Endorsement
of the WHO-UNICEF Operational
Framework for PHC**

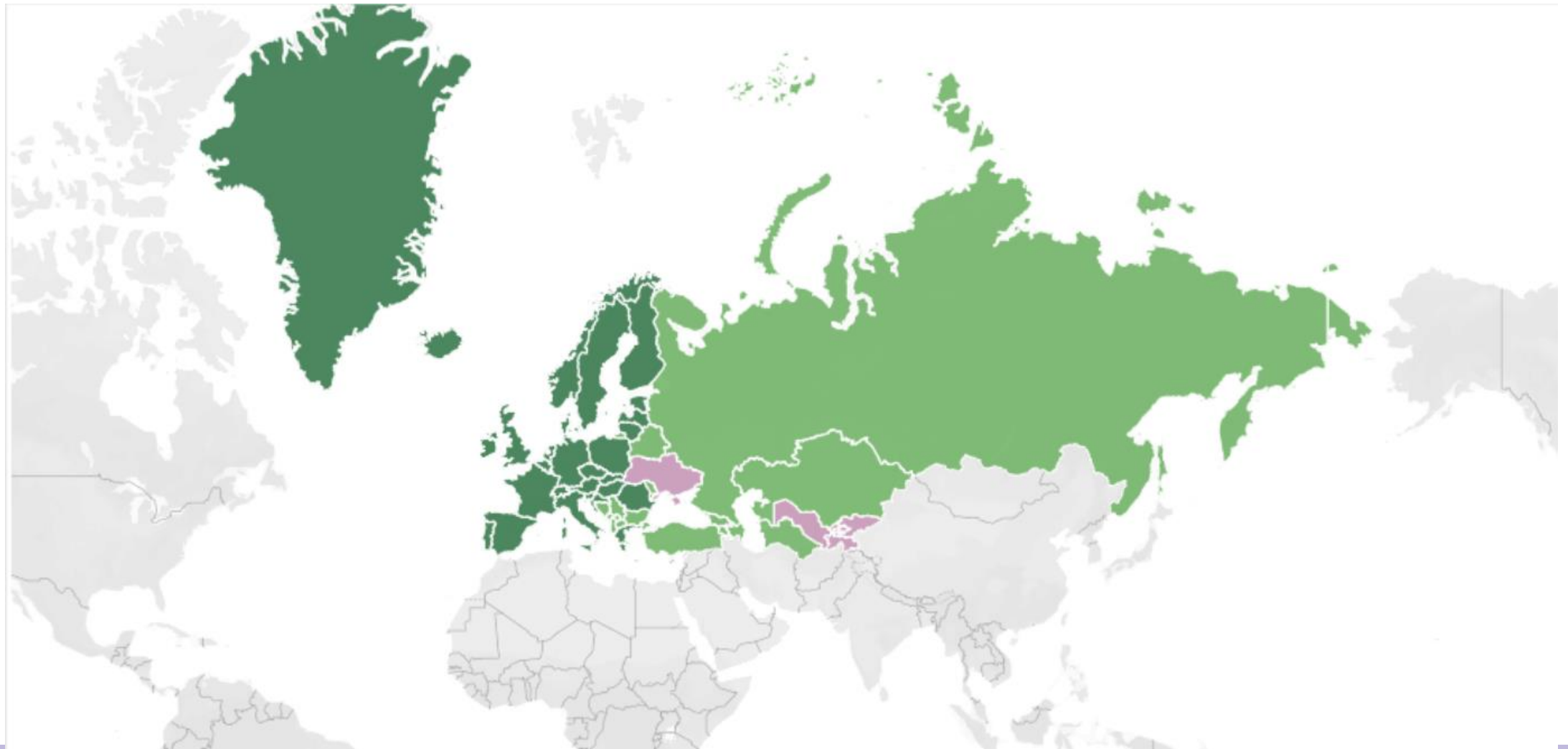
2021

Landmark Resolution
on Primary Health
Care at the 71st Session
of the WHO Regional
Committee for Europe

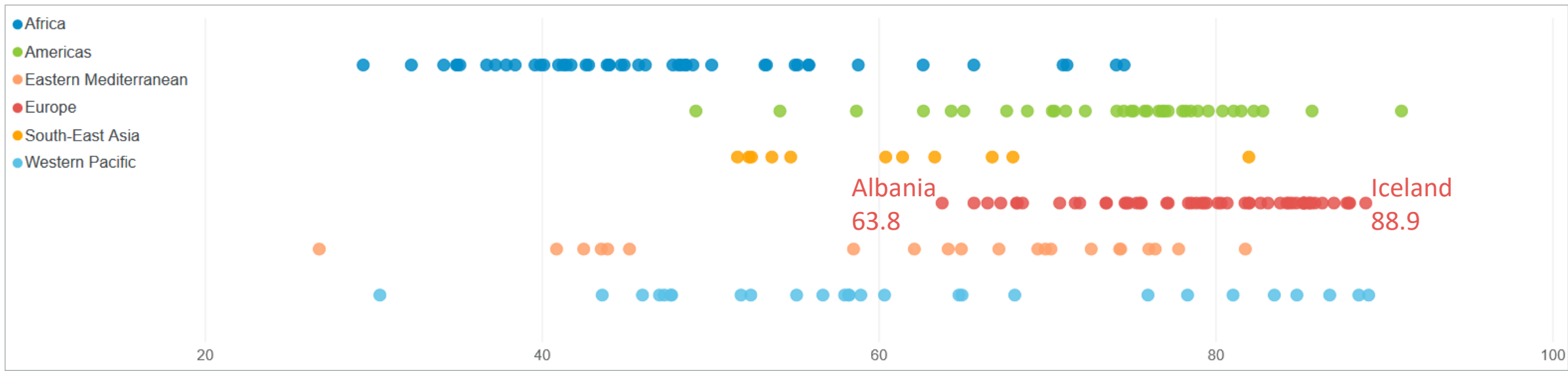
2022

**Launch of the WHO-UNICEF
Primary Health Care Measurement
Framework and Indicators: Monitoring
Health Systems through a Primary Health
Care Lens**

Europe



UHC Service Coverage Index (SDG 3.8.1)



Outlook

- I. Palliative care integration in primary care in **Europe**
- II. Three successful examples in different countries in **Europe**
- III. What really helps facilitate the delivery of palliative care in primary care in **Europe**?

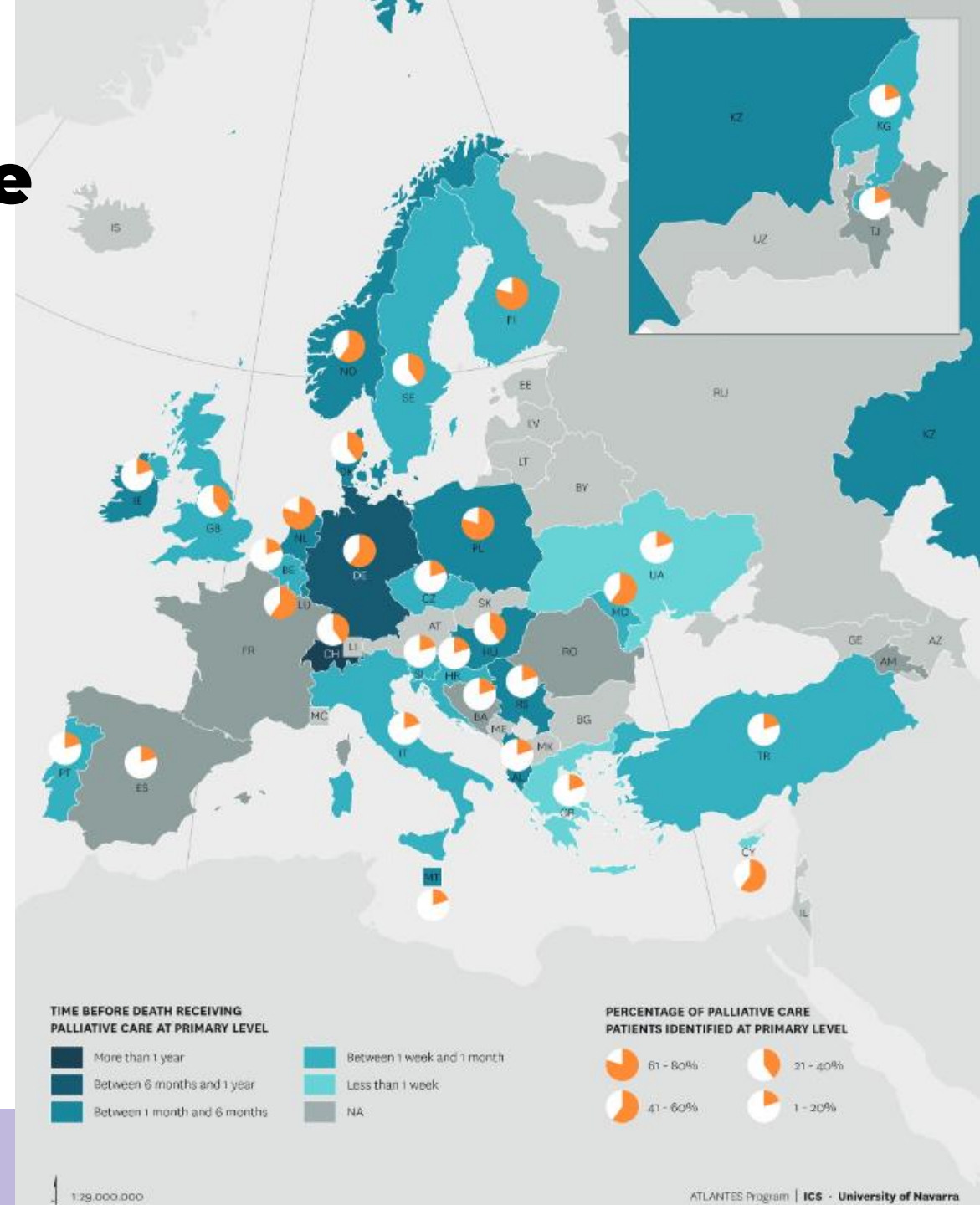
I. Palliative care integration in primary care in **Europe**?

Integration of Palliative Care at the Primary Care level

Identifying patients at the primary level

Garralda E, Murray S, Moin S (2019) EAPC Atlas of Palliative Care in Europe

#EAPC2023

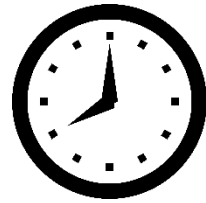


Integration of Palliative Care at the Primary Care level

Incentives for early identification - type



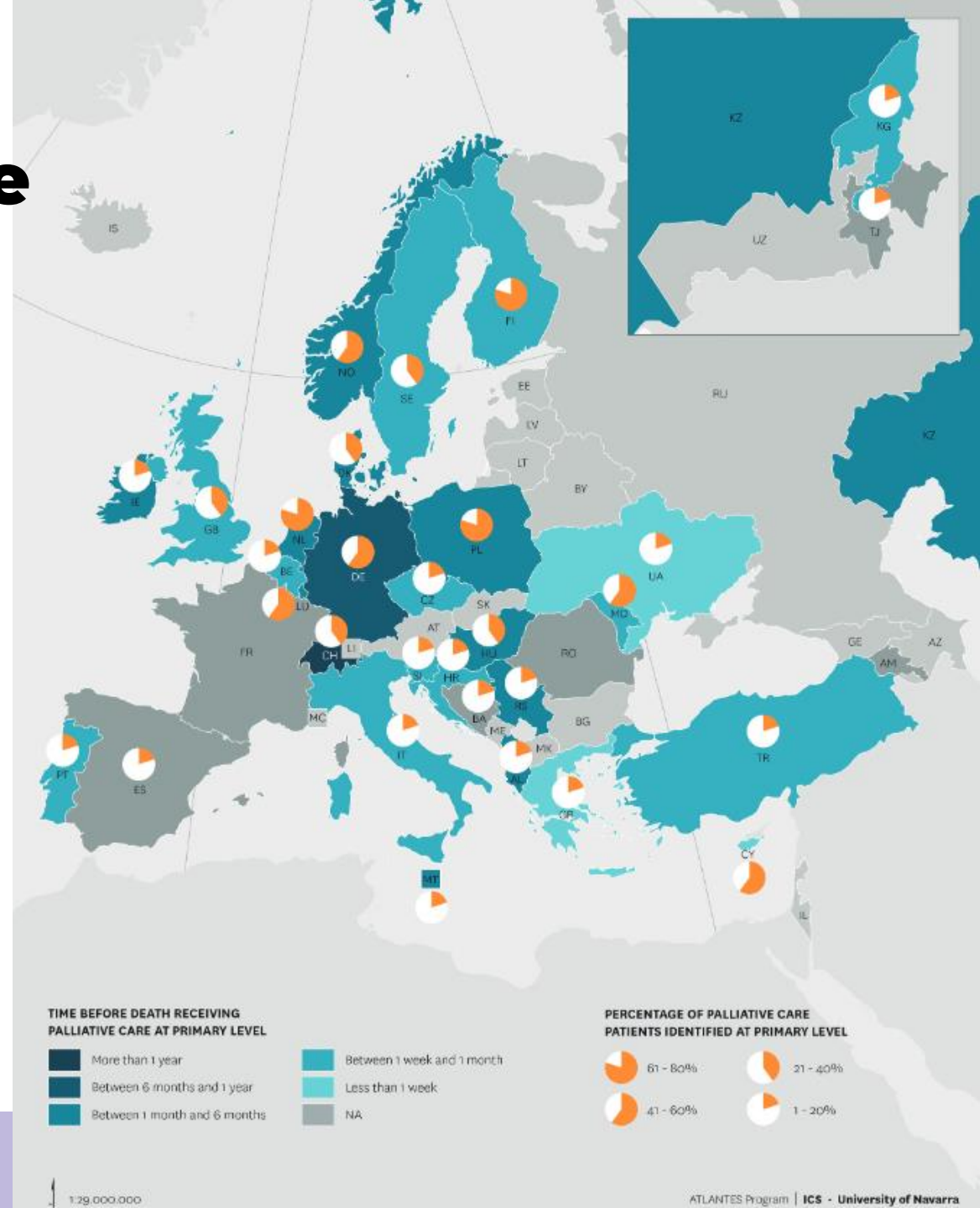
Germany
Netherlands
Armenia
Luxemburg
Spain
United Kingdom



Serbia

Garralda E, Murray S, Moin S (2019) EAPC Atlas of Palliative Care in Europe

#EAPC2023



Integration of Palliative Care at the Primary Care level

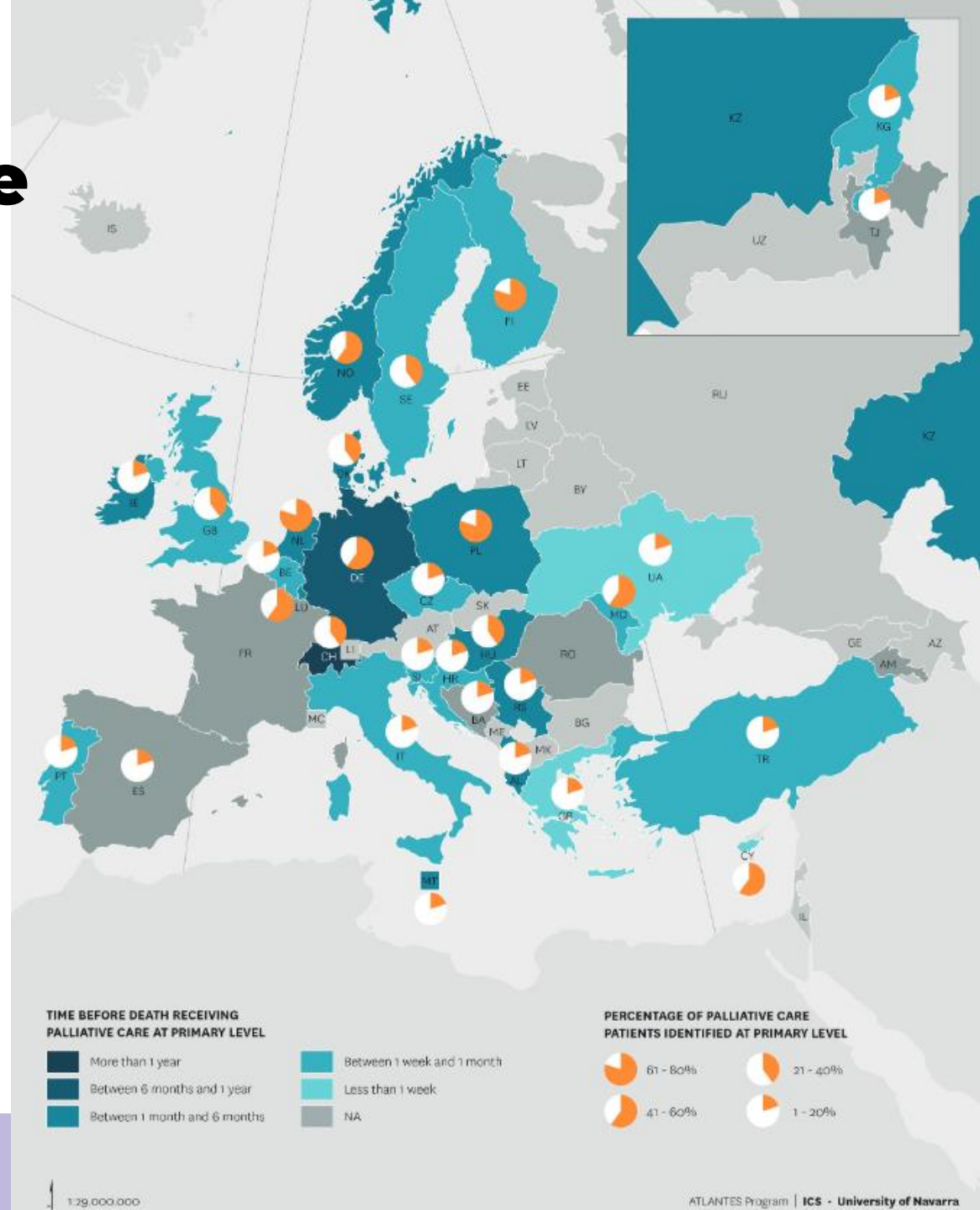
Official documents regulating PPC provision

COUNTRY	LAW	PLAN	COUNTRY	LAW	PLAN
Armenia	●	●	Albania	●	○
France	●	●	Hungary	●	○
Kyrgyzstan	●	●	Ireland	○	●
The Netherlands	●	●	Italy	●	○
Croatia	●	●	Kazakhstan	●	●
Germany	●	●	Luxembourg	●	○
Republic of Moldova	●	●	Malta	○	●
Slovenia	●	●	Norway	○	●
Spain	●	●	Poland	●	○
Tajikistan	●	●	Portugal	●	○
Turkey	●	●	Romania	●	○
Belgium	●	○	Serbia	○	●
Czech Republic	○	●	Sweden	○	●
Denmark	○	●	Switzerland	○	●
Finland	○	●	Ukraine	●	○
			Scotland	○	●

21/34 Law
22/34 Plan

Garralda E, Murray S, Moin S (2019) EAPC Atlas of Palliative Care in Europe

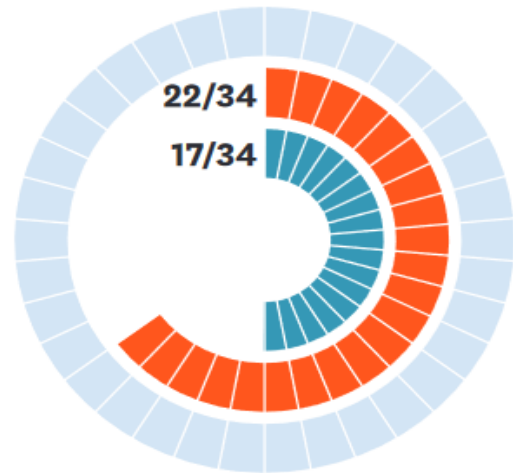
#EAPC2023



Integration of Palliative Care at the Primary Care level

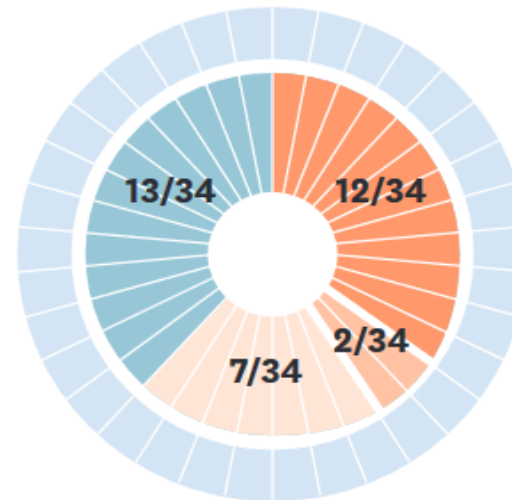
Primary palliative care education in medical schools

PRIMARY PC TRAINING FOR FAMILY DOCTORS AND GENERAL PHYSICIANS



- Primary care PC components in residency programme of Family Doctors
- Primary care PC components included in the training of General Physician

PRIMARY PC EDUCATION



21/34

Countries teach primary PC in some medical schools

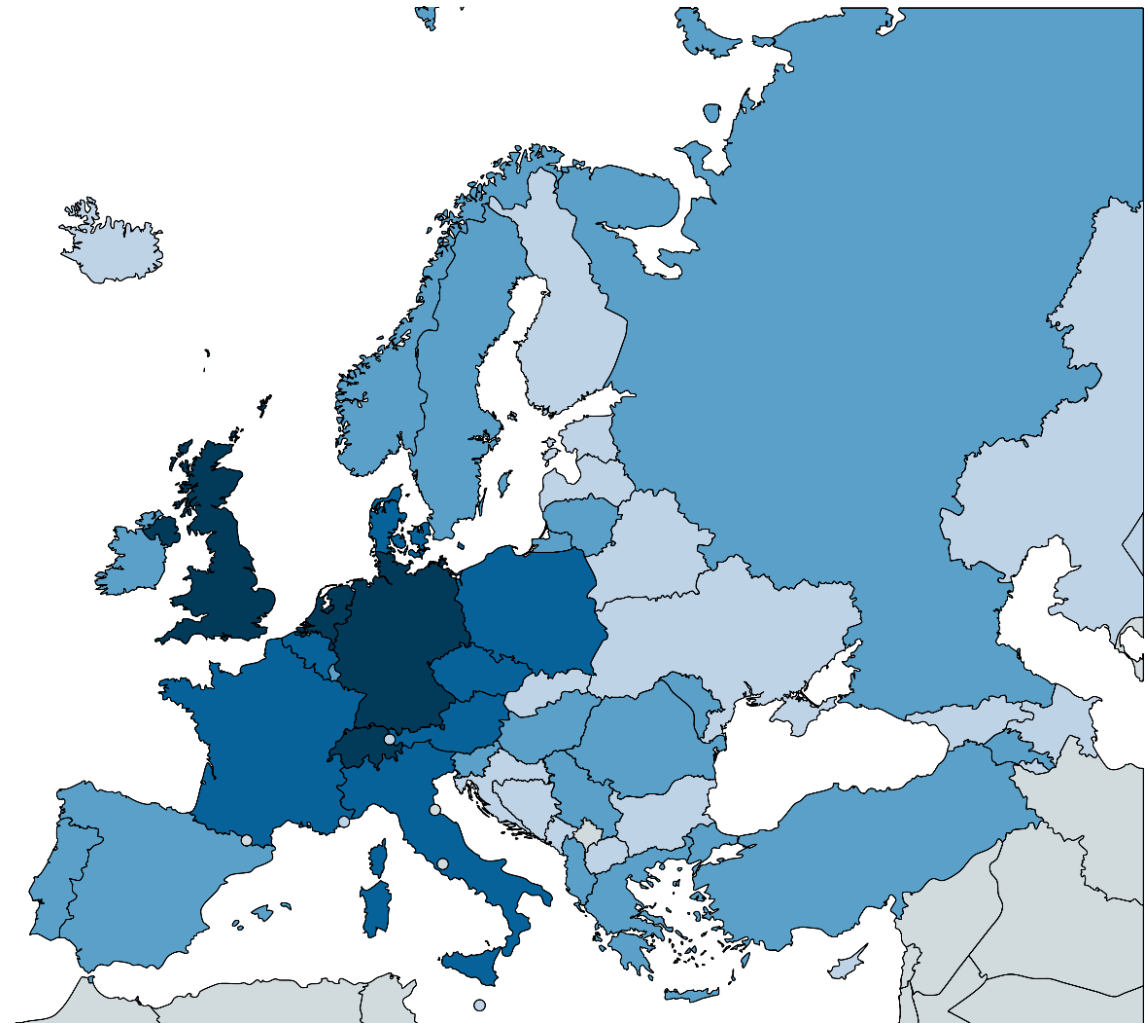
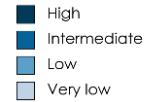
- All medical schools
- Half of medical schools
- Less than half medical schools
- No teaching

Garralda E, Murray S, Moin S (2019) EAPC Atlas of Palliative Care in Europe

Integration Capacity Score

Fields

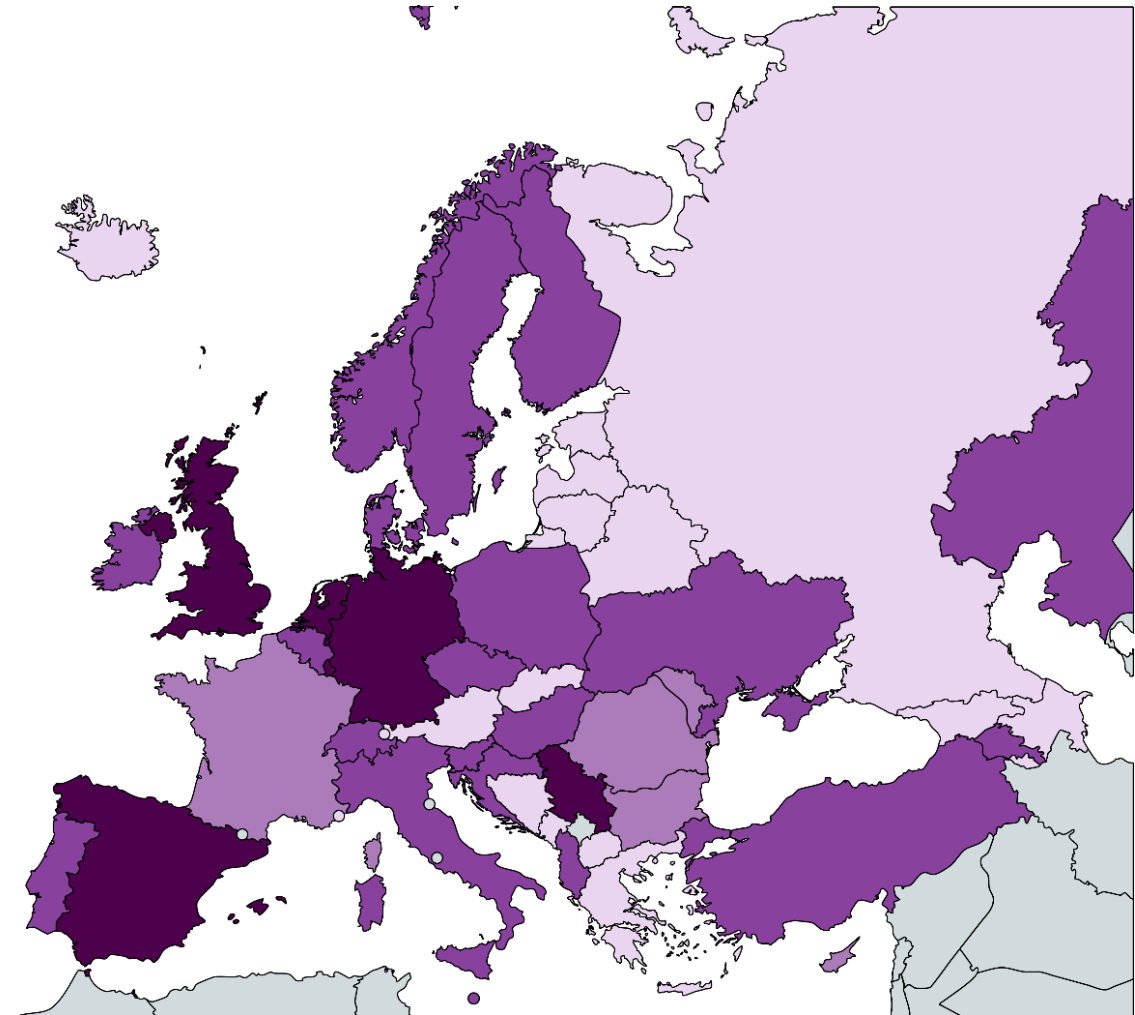
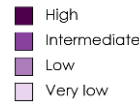
- Pediatrics
- Cardiology
- Oncology
- Primary care Level
- Long-term facilities
- Volunteers and PC



Sanchez et al. (2021) BMJ Supportive & Palliative Care

Created with mapchart.net

Integration Capacity Score Primary Care Level



Indicators

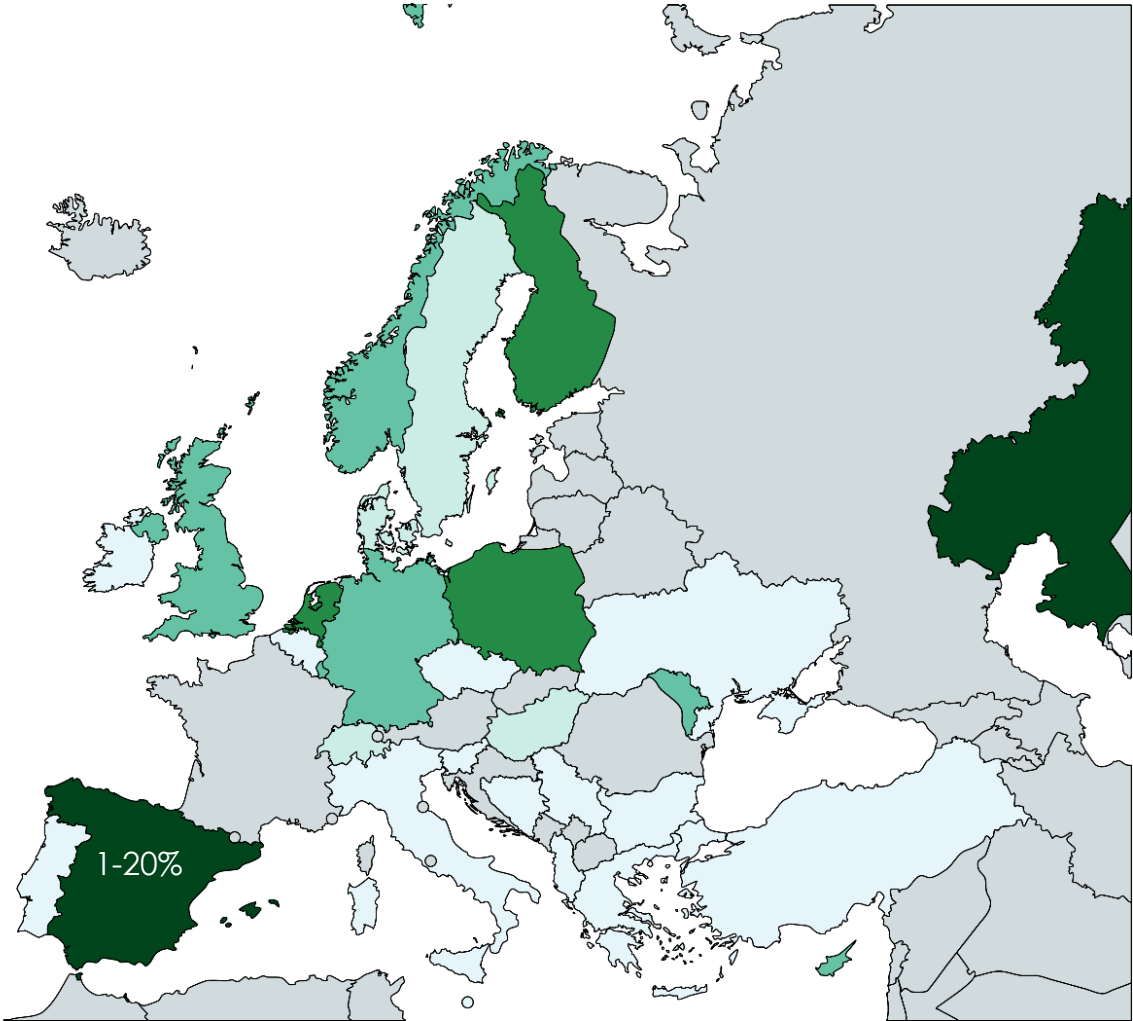
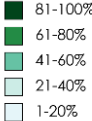
- % of patients identified at the primary care level
- Incentives to promote early identification of patients at the primary care level
- Existence of official policy documents regulating primary PC
- Primary PC education

Sanchez et al. (2021) BMJ Supportive & Palliative Care

Created with mapchart.net

Integration Capacity Score Primary Care Level

% of patients identified at the
primary care level



Sanchez et al. (2021) BMJ Supportive & Palliative Care

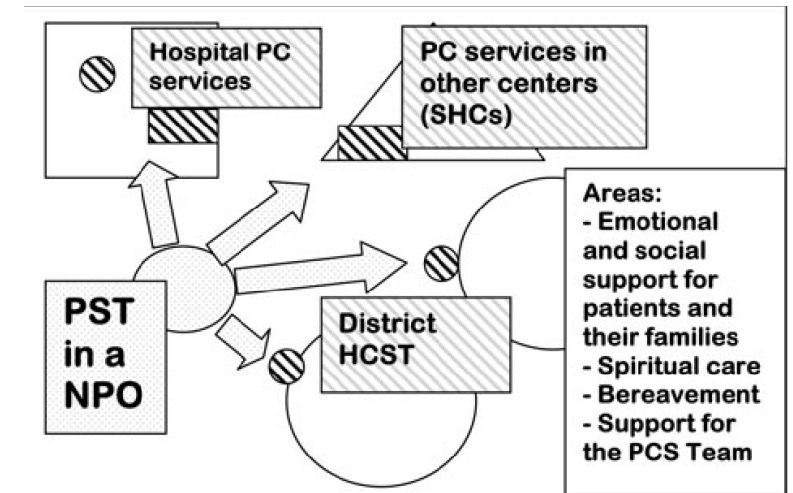
Created with mapchart.net

II. Three successful examples in different countries in **Europe**?

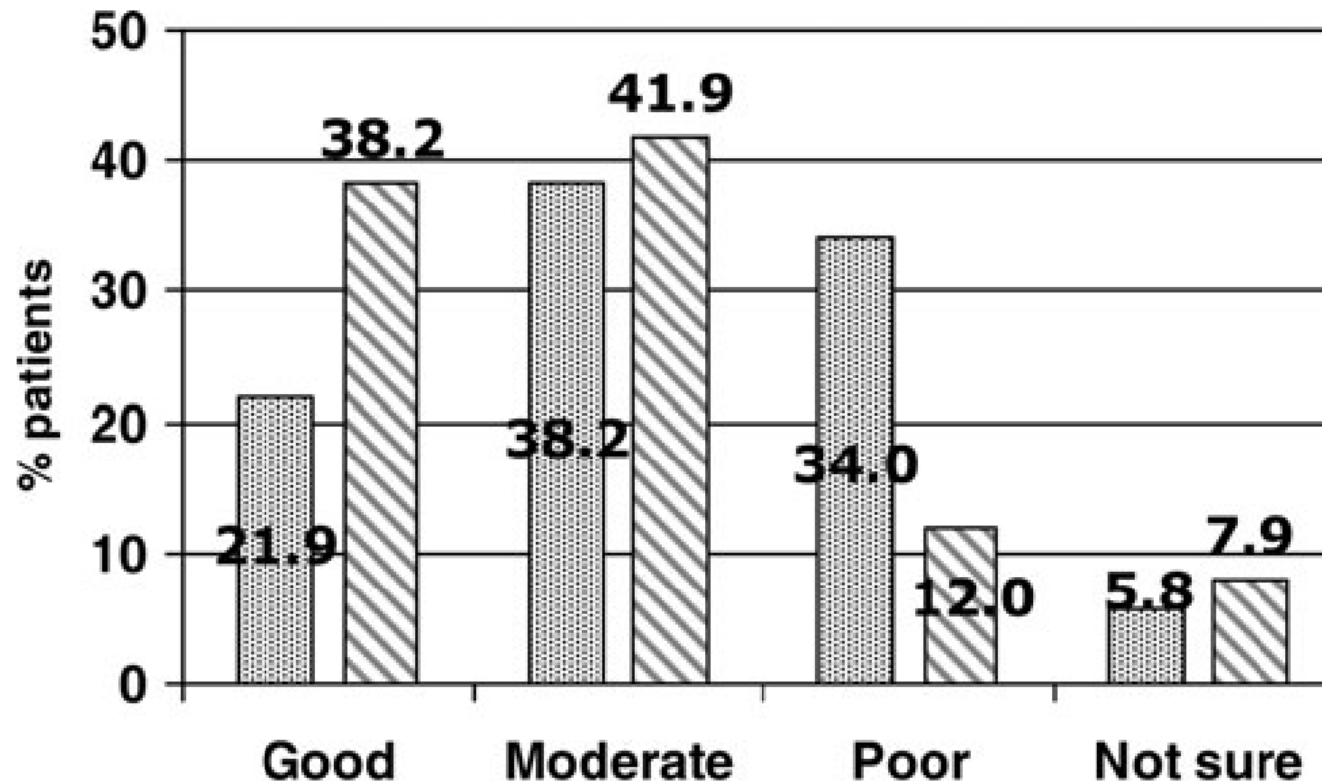
1. Catalonia: Comprehensive Care for Patients with Advanced Illnesses, and their Families

Improvement of psycho-social care of terminally ill patients (and their families) with a special focus on spiritual aspects through the implementation of Psycho-social Support Teams (PSTs) providing support for preexisting PC services.

- Training
- Common documentation
- A computer-based virtual campus



1. Catalonia: Comprehensive Care for Patients with Advanced Illnesses, and their Families



Emotional well-being at the first and last assessment

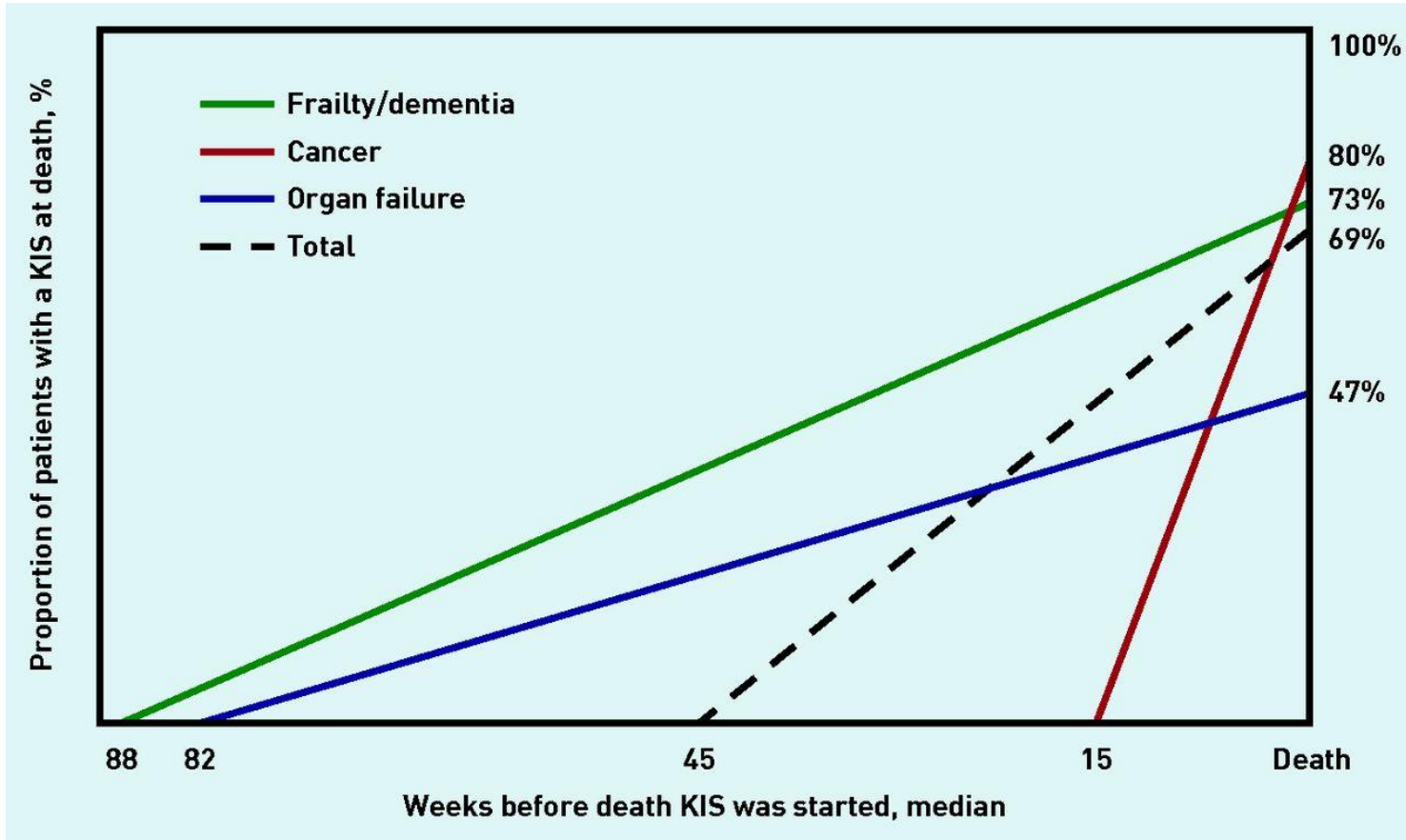
2. Germany: Hospice and Palliative Care Act

- The Hospice and Palliative Care Act (HPG) came into force at the end of 2015 in order to improve the palliative care structures.
- A catalog of measures that promotes the nationwide expansion of hospice and palliative care throughout Germany, especially in structurally weak and rural regions.
- Outpatient and inpatient hospice care is more financially supported by the health insurance companies.

3. Scotland: Key Information Summary (KIS)

- created in primary care by GPs in 2013
- enable sharing of patient information, preferences across care settings, and inform emergency and out-of-hours care
- helps to coordinate chronic disease management and early palliative care.
- was associated with a greater likelihood of dying in a community setting (home, care home, or hospice).
- Most KIS were considered useful/highly useful.

3. Scotland: Key Information Summary (KIS)



Proportion of patients with a Key Information Summary (KIS) in place before death, and if so, the median number of weeks before death KIS was started by trajectory

III. What really helps facilitate the delivery of palliative care in primary care in **Europe?**



Barriers

- Workload of GPs and lack of time to implement palliative care
- Patients present increasingly with multiple chronic conditions rather than with a single diagnosis
- Early identification was rare
- Lack of training
- Lack of multi-professional teamwork in primary care
- Lack of specialists in palliative care
- Most patients and professionals are unwilling to talk about dying

Most frequent



Less frequent

Opportunities

- GPs motivated
- Many policies and guidelines
- Educational activities and resources
- Use of specific tools to identify patients
- Advance care planning
- Development of information systems and communications including out of hours
- Developing research base
- Community participation

Conclusion

- Challenge in the assessment of Primary Palliative Care due to complexity of the performance aspects and integration of assessments in policies.
- Degree of integration in primary care varies between and inside countries.
- Good examples (HICs)